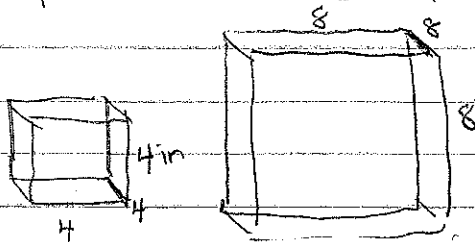


8.6

Surface Area Similar Solids



Scale factor 2

S.A. sm cube

$$4 \cdot 4 \cdot 14$$

$$64$$

S.A. large cube

$$64 \times 2^2$$

$$64 \times 4$$

$$256 \text{ in}^2$$

$$\boxed{\text{S.A. (original)} \times (\text{scale factor})^2}$$